

ROTARY DRUM WASHER

Standard Features of the Rotary Drum Washer

- Heavy-duty drum in sizes ranging from 18in (457.2mm) to 60in (1524mm) diameter
- NEMA 12 rated Control Panel
- Steel or Stainless Steel Construction
- Ambient and Heated Solution Tanks
- Low Water Protection Sensor
- Vertical Solution Pumps
- Large capacity solution tanks have sloped bottoms for easy discharge for cleaning.
- Stainless steel debris screens between the main solution tank and the pump intake to prevent motor damage.
- Large hinged canopy access doors allow for easy cleaning of washer interior and solution tank

The Rotary Drum Washer is a universal system designed for batch production utilizing a powered rotary drum with an internal helix to transport the parts through the system.

Typical applications for the Rotary Drum Washer are the general cleaning of small parts produced in high production volumes. Metal fasteners, stampings and electrical items are examples of products cleaned in the Rotary Drum Washer. System designs include one, two or more process stages depending on the cleaning application.

Spray piping is available in black iron, stainless steel or CPVC materials. Vertical process spray pumps used in the Rotary Drum Washer are supplied in all iron, stainless fitted or all stainless steel depending on the type of solutions used for the application.

The Rotary Drum Washer construction can include carbon steel or stainless steel tanks and housing. The heavy-duty drum is fabricated from stainless steel perforated or wedge wire materials, and are available in sizes ranging from 18in (457.2mm) to 60in (1524mm) diameter. The drum assembly includes through hardened Chrome Molybdenum steel rings, heavy-duty bearing and support components, and a variable speed electric drum drive system.

Standard features include marine type tank clean out doors, automatic tank liquid level controls, housing access doors, tank extensions with access doors, overflow and tank drain connections, pump protection screens, washer housing exhaust fans, and sloped tank bottoms. Natural gas, electric or steam heating systems are options.

A pre-wired electrical control system is included with every Rotary Drum Washer System. A NEMA 12 enclosure is used to house NEMA or IEC electrical components including the main disconnect switch. The door mounted push buttons, indicating lights and temperature controls are also included. We can also provide special electrical controls such as programmable logic control (PLC) systems including installation, programming and documentation.

Each Rotary Drum Washer System is tested for performance in function, accuracy, safety systems, and temperature uniformity. Our Technical Service Department provides international support for ALL makes and models of thermal and clean processing equipment. The Rotary Drum Washer System will carry an 18-month extended manufacturer's warranty from the date of shipment.

ROTARY DRUM WASHER

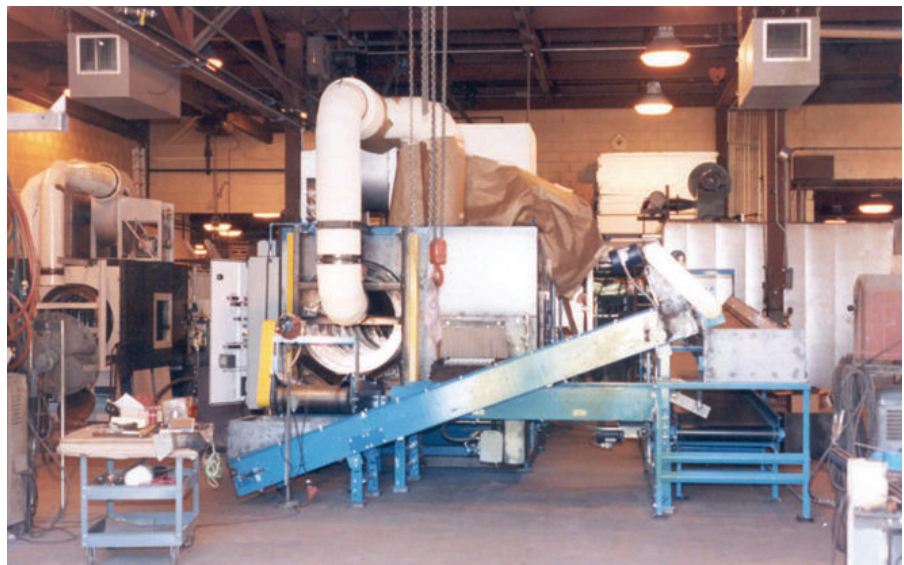
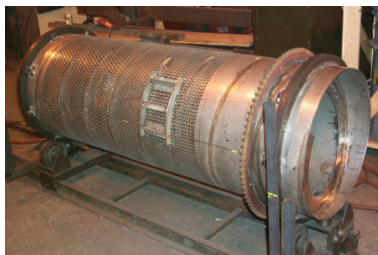


TECHNICAL BULLETIN

Specification	Rotary Drum Washer
Configuration	One or Two Stage Units
Drum Diameter	From 18in (457.2mm) to 60in (1524mm) diameter
Material Handling	Heavy-duty drum is fabricated from stainless steel perforated or wedge wire materials.
Pump	Solution pumps are vertical discharge type allowing easy removal for maintenance without draining tank.
Stages	Stages are application specific and may include pre-rinse, pre-wash, and wash.
Heated Stage	Any stage can be supplied as a heated stage.
Process Tank	All tanks can be constructed with Steel or Stainless Steel, Continuous Welded, and incorporate the necessary Baffles for proper fluid flow.
Spray Piping	Black Iron, Stainless Steel, PVC or CPVC
Fresh Water Manifold	CPVC Fresh Water System
Washer Housing	The Housing for all stages will be fabricated with Steel or Stainless Steel.
Washer Access	Access doors will be provided along the entire length of the washer to allow access from the roof into the interior washer chamber. Stage access doors will be provided in each spray zone and at each blow-off.
Exhaust	One (1) Tubeaxial Stainless Steel Exhaust Fan
Power Source	Main Power Supplies 208 to 690 Volt AC, 50 and 60 HZ Control Voltage 24 Volt DC or 120 or 220 Volt AC
Heat Medium	Electric, Gas, LPG, Hot Water and Steam
Control System	Standard Relay Logic Optional PLC Control

Optional Equipment:

- Pneumatic Door Operation
- Oil Removal
- Filtration
- Blow-off
- Chemical Controls



Close up of Rotary Drum (left). Combination Rotary Drum and Flat Belt Conveyor Washer for Aqueous Degreasing (above). A Monorail and Rotary Drum washer is also available.

HEADQUARTERS USA

International Thermal Systems LLC
4697 West Greenfield Avenue
Milwaukee, WI 53214
USA

Fax: 414-672-8800
Main: 414-672-7700

EUROPE

International Thermal Systems Ltd
Albany House, Suite B1 14 Shute End
Wokingham, Berkshire RG40 1BJ
United Kingdom

Main: 44 (0) 7900 191352

ASIA

International Thermal Systems
(Shanghai) Co LTD
NO 725 Peng Feng Road, Bldg #2
Da Gang, Town of Xiao Kunshun
Songjiang District
Shanghai, China 201614

Fax: +86 21 6774 2860
Main: +86 21 6774 1033

